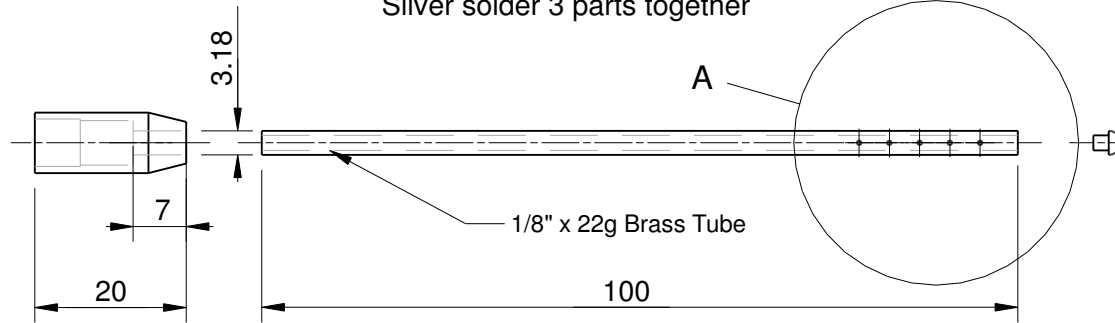


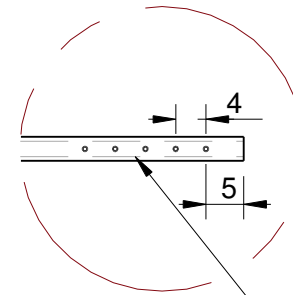
Drill and Thread to suit Gas Hose

Silver solder 3 parts together



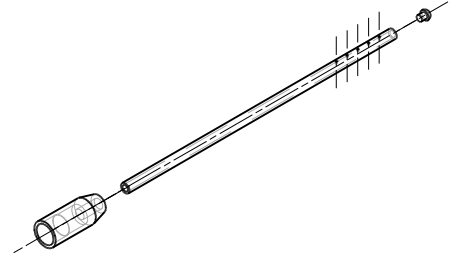
A

1/8" x 22g Brass Tube

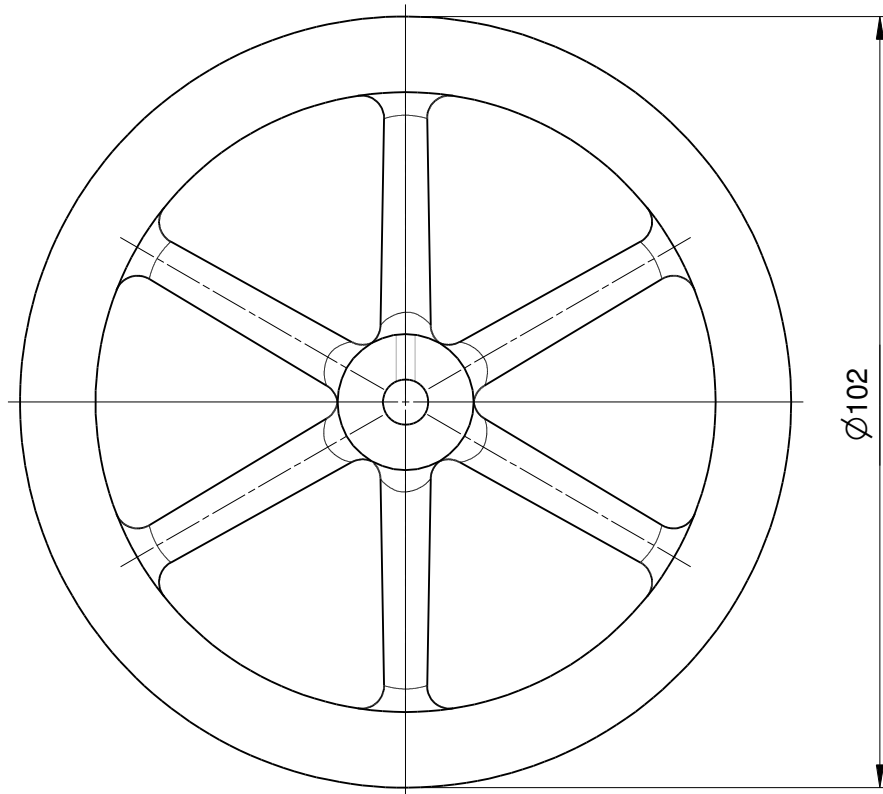


Detail A

5 of 0.5 $\varnothing$  Holes @ 4.0 ctrs



**Burner Tube  
Brass  
Silver solder parts together**



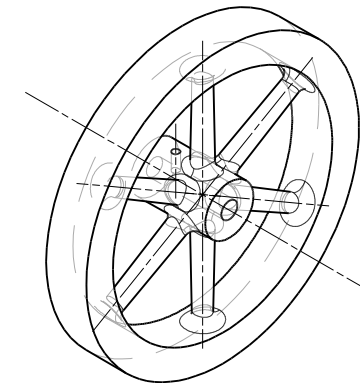
M3

$\varnothing 6$

10.5

2.5

15



**Flywheel  
Iron Casting**

**CHUKY**

Burner Tube and Flywheel	
Drawing No 14	
Material : Brass & Cast Iron	
Scale 1:1	