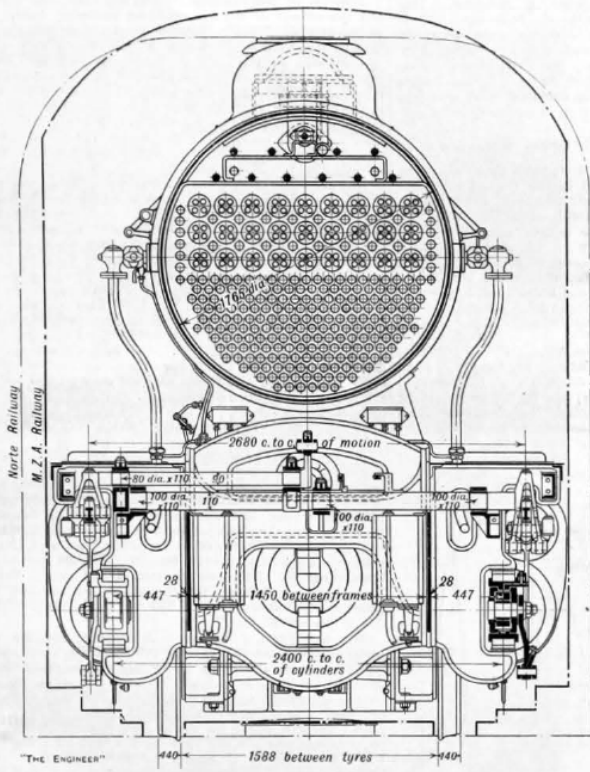
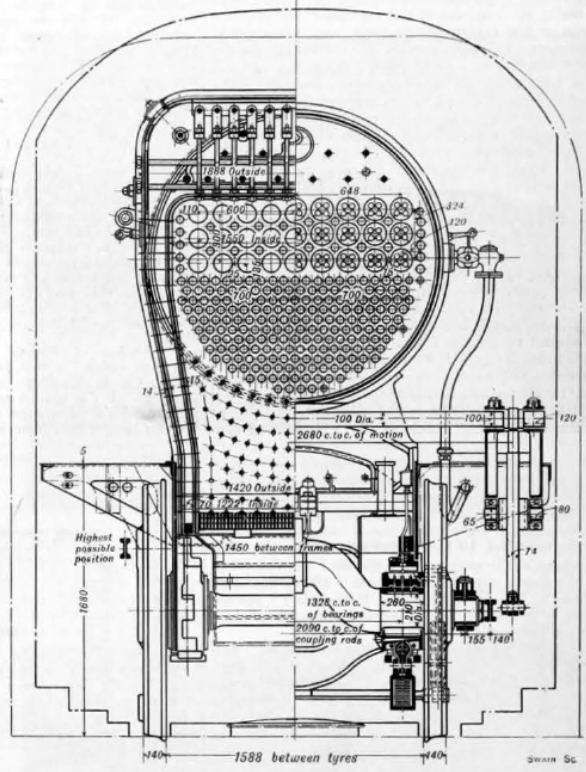


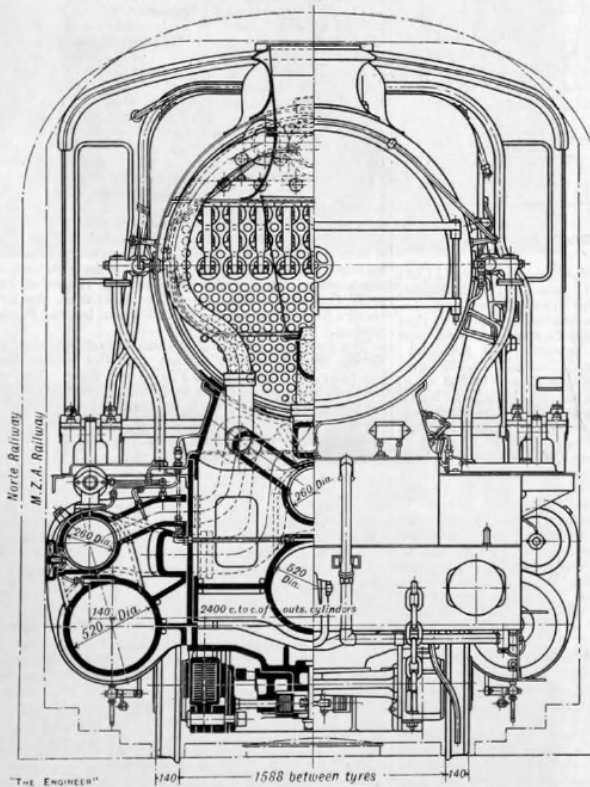
THREE-CYLINDER EIGHT-COUPLED LOCOMOTIVE FOR SPAIN



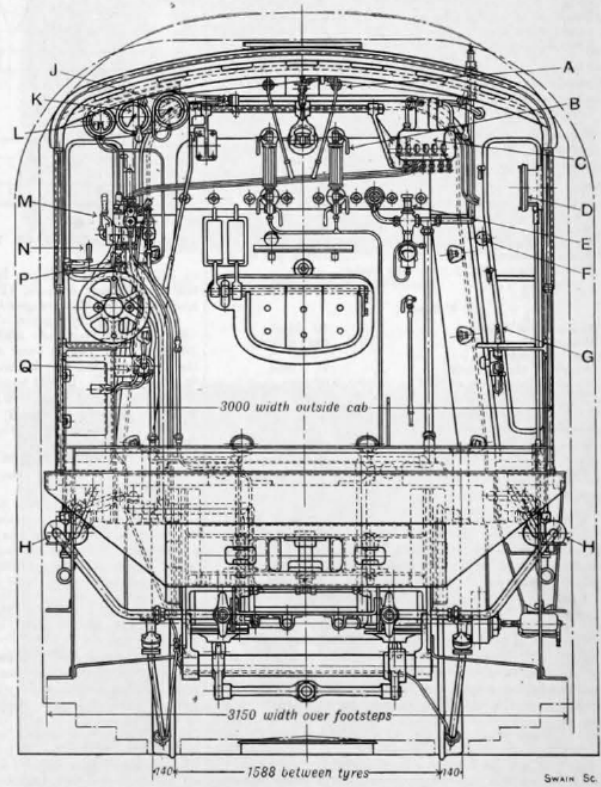
SECTION THROUGH BOILER



SECTION THROUGH FIRE-BOX AND CRANK AXLE



HALF-SECTION THROUGH CYLINDERS AND HALF-FRONT VIEW



ARRANGEMENTS IN THE CAB

- A.—Injector steam cocks.
- B.—Dewrance's water gauges.
- C.—Six-feed vacuum lubricator, capacity 6 pints.
- D.—Haaler speed indicator and recorder.
- E.—Heintz steam heating.
- F.—Blower cock.
- G.—Drop grate handle.
- H H.—Gresham and Craven's No. 10 hot water injectors.

- J.—Steam pressure gauge.
- K.—Steinle pyrometer.
- L.—Duplex vacuum gauge.
- M.—30/20 Drednought ejector with steam brake valve.
- N.—Leading sanding handle.
- P.—Cylinder cock handle.
- Q.—Steam sanding valve.