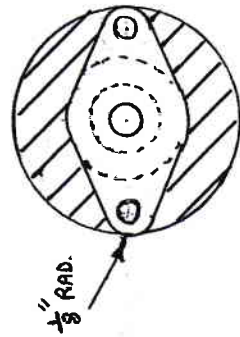
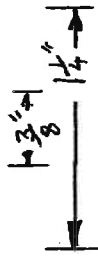
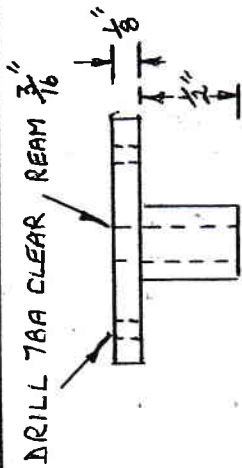
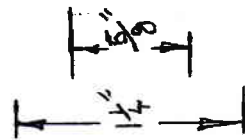


DOUBLE SIDE BEAM ENGINE

ENG. N^o 19

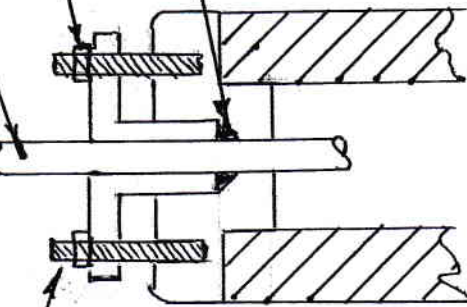


TURN FROM 1/4 DIA BRASS
CUT / FILE OR MILL AWAY
SHADED AREA TO FORM
GLAND PROFILE



PISTON ROD

7/8 A. NUTS



INSERT A FEW
TURNS OF GRAPHITE
STEAM PACKING TO
RAISE THE PISTON ROD
GLAND ABOVE THE
LEVEL OF THE CYLINDER
TOP COVER STUDS

7/8 STUD
ROD APPX
1 3/16 LENGTH

PISTON ROD GLAND

2 OFF BRASS

