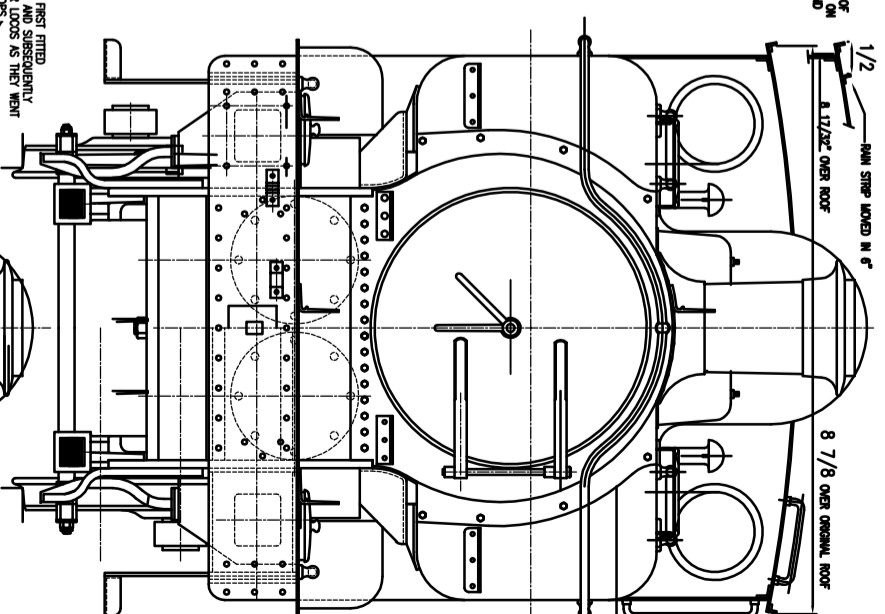


**MODIFICATIONS TO ROOF
FOR LOCOS WORKING ON
LONDON UNDERGROUND**



THESE HANDRAILS FIRST FITTED TO 9795 IN 1934 AND SUBSEQUENTLY FITTED TO EARLIER LOCOMOTIVES AS THEY WENT THROUGH THE SHOPS.

