

QTY.	PART NUMBER
1	08-05-00-1-01-BOILER SHELL
1	08-05-00-1-02-STEAM SUPPLY MANIFOLD
2	08-05-00-1-03-PIVOT PIN
1	08-05-00-1-04-PUMP & INJECTOR MOUNTING PLATE
1	08-05-00-1-05-MANHOLE RING
1	08-05-00-1-06-MANHOLE COVER
2	08-05-00-1-07-MANHOLE CLAMP
17	08-05-00-1-08-BOILER TUBE
1	08-05-00-1-09-FIRE DOOR
1	08-05-00-1-09-FIRE DOOR
1	08-05-00-1-10-FIRE DOOR LEVER
1	08-05-00-1-11-FIRE DOOR OPERATING LEVER
1	08-05-00-1-12-FIRE DOOR LINK LEVER
1	08-05-00-1-13-LEFT HAND HORN PLATE
1	08-05-00-1-14-RIGHT HAND HORN PLATE
1	08-05-00-1-15-TOP STEERING SPINDLE BRACKET
2	08-05-00-1-16-ASH PAN LATCH
1	08-05-00-1-17-ASH PAN
1	08-05-00-1-18-ASH PAN ADJUSTABLE AIR FLAP
1	08-05-00-1-19-ASH PAN FLAP LIFTING ROD
1	08-05-00-1-20-R-H STEERING BEARING PLATE
1	08-05-00-1-21-L-H STEERING BEARING PLATE
1	08-05-00-1-22-FRONT FRAME PLATE
1	08-05-00-1-23-REAR FRAME PLATE
2	08-05-00-1-24-REAR WHEEL AXLE BLOCK
1	08-05-00-1-25-CRANK SHAFT BEARING PLATE
1	08-05-00-1-25-CRANK SHAFT BEARING PLATE
3	08-05-00-1-26-OIL CUP TYPE-A
2	08-05-00-1-26-OIL CUP TYPE-A
1	08-05-00-1-27-IDLER SHAFT BEARING BRACKET
1	08-05-00-1-28-SMOKE BOX
1	08-05-00-1-29-SMOKE BOX DOOR LOCK
1	08-05-00-1-30-CHIMNEY BASE
1	08-05-00-1-31-MAIN STEERING SADDLE
1	08-05-00-1-32-FRONAXLE PIVOT BRACKET+AXLE
1	08-05-00-1-33-TENDER
1	08-05-00-1-34-TENDER DRAW BAR
1	08-05-00-1-35-REVERSING LEVER QUADRANT
1	08-05-00-1-36-REVERSING LEVER PIVOT BRACKET
1	08-05-00-1-37-REVERSING LEVER
1	08-05-00-1-38-TOP GUIDE ROLLER BRACKET
1	08-05-00-1-39-BOTTOM GUIDE ROLLER BRACKET
1	08-05-00-1-40-TENDER FOOT STEP
1	08-05-00-1-41-TENDER BRAKE BRACKET
1	08-05-00-1-42-TENDER BRAKE SPINDLE BRACKET
1	08-05-00-1-43-BRAKE LEVER
1	08-05-00-1-44-BRAKE LEVER NUT
1	08-05-00-1-45-BRAKE BAND
1	08-05-00-1-46-WATER LIFTER BRACKET
1	08-05-00-1-47-WATER FILLER
1	08-05-00-1-48-HOSE PIPE HANGER
1	08-05-00-1-49-INJECTOR WATER SUPPLY VALVE
1	08-05-00-1-50-STEAM MANIFOLD
1	08-05-00-1-51-WATER LIFTER
2	08-05-00-1-52-WATER LIFTER & INJECTOR STEAM SUPPLY VALVE
1	08-05-00-1-53-DUMMY INJECTOR
1	08-05-00-1-54-MECHANICAL WATER PUMP
1	08-05-00-1-55-MECHANICAL WATER PUMP VALVE BODY
1	08-05-00-1-56-CHECK VALVE (FROM INJECTOR)
1	08-05-00-1-57-CHECK VALVE (FROM BYPASS VALVE)
1	08-05-00-1-58-WATER LEVEL GAUGE
1	08-05-00-1-58-WATER LEVEL GAUGE
2	08-05-00-1-59-BLOW DOWN VALVE
1	08-05-00-1-60-CYLINDER
3	08-05-00-1-61-GLANDS FOR CYLINDER
1	08-05-00-1-62-CYLINDER FRONT COVER
1	08-05-00-1-63-CYLINDER REAR COVER
1	08-05-00-1-64-VALVE CHEST COVER
1	08-05-00-1-65-STEAM EXHAUST PIPE
1	08-05-00-1-66-WEIGH SHAFT BEARING HOLDER
1	08-05-00-1-67-SAFETY VALVE
1	08-05-00-1-68-GOVERNOR STEM PORT
1	08-05-00-1-69-GOVERNOR HOUSING
1	08-05-00-1-70-GOVERNOR STEAM CONTROL PISTON
1	08-05-00-1-71-GOVERNOR DRIVE SHAFT
1	08-05-00-1-72-GOVERNOR BEVEL GEAR
1	08-05-00-1-73-GOVERNOR FLYWEIGHT
1	08-05-00-1-73-GOVERNOR FLYWEIGHT
1	08-05-00-1-73-GOVERNOR FLYWEIGHT
1	08-05-00-1-74-GOVERNOR TOP FLYWEIGHT HOLDER
1	08-05-00-1-75-GOVERNOR PRESSURE LEVER
1	08-05-00-1-76-GOVERNOR ADJUSTABLE WORM
2	08-05-00-1-77-CYLINDER DRAIN COCK
1	08-05-00-1-78-BLOWER VALVE
1	08-05-00-1-79-GEAR CHANGE BODY BRACKET
1	08-05-00-1-80-PRESSURE GAUGE
1	08-05-00-1-81-WHISTLE
1	08-05-00-1-82-ASHPAN RELEASE CROSSBAR
1	08-05-00-2-01-STEERING SHAFT
1	08-05-00-2-02-STEERING WHEEL+SPINDLE
1	08-05-00-2-03-CRANKSHAFT+FLYWHEEL
1	08-05-00-2-04-CRANKSHAFT GEAR 15T
1	08-05-00-2-05-CRANKSHAFT GEAR 24T
1	08-05-00-2-06-VALVE ECCENTRICS

QTY.	PART NUMBER
1	08-05-00-2-07-PISTON+CROSSHEAD
1	08-05-00-2-08-CON ROD
1	08-05-00-2-09-WIEGH SHAFT
1	08-05-00-2-10-REVERSING CONTROL LEVER LINK
1	08-05-00-2-11-REGULATOR VALVE
1	08-05-00-2-12-REGULATOR HANDLE
1	08-05-00-2-13-REGULATOR CONTROL LEVER LINK
1	08-05-00-2-14-SLIDE VALVE
1	08-05-00-2-15-EXPANSION LINK
1	08-05-00-2-16-DIE BLOCK
2	08-05-00-2-17-LIFTING LINK
1	08-05-00-2-18-ECCENTRIC STRAP
1	08-05-00-2-18-ECCENTRIC STRAP
1	08-05-00-2-19-COUNTER SHAFT
1	08-05-00-2-20-COUNTER SHAFT OUTER GEAR WHEEL
1	08-05-00-2-21-COUNTER SHAFT SLIDING GEAR WHEEL-1
1	08-05-00-2-22-COUNTER SHAFT SLIDING GEAR WHEEL-2
1	08-05-00-2-23-COUNTER SHAFT SLIDING GEARS OPERATING HANDLE
1	08-05-00-2-24-COUNTER SHAFT SLIDING GEARS OPERATING HANDLE RACK
1	08-05-00-2-25-IDLER SHAFT
1	08-05-00-2-26-IDLER SHAFT OUTER GEAR WHEEL-1 62T
1	08-05-00-2-27-IDLER SHAFT OUTER GEAR WHEEL-2 24T
1	08-05-00-2-28-REAR WHEEL AXLE
1	08-05-00-2-29-DIFFERENTIAL GEARS
1	08-05-00-2-30-WHEEL SHAFT GEAR WHEEL 96T
1	08-05-00-2-32-BRAKE DRUM
1	08-05-00-2-33-WINDING DRUM
1	08-05-00-2-34-WINDING DRUM TENSION SPRING
1	08-05-00-2-35-L-H SIDE WHEEL ATTACHMENT PLATE
1	08-05-00-2-36-R-H SIDE WHEEL ATTACHMENT PLATE
1	08-05-00-2-37-REAR WHEEL HUB
1	08-05-00-2-37-REAR WHEEL HUB
1	08-05-00-2-38-REAR OUTER RIM
1	08-05-00-2-38-REAR OUTER RIM
14	08-05-00-2-39-SPOKE TYPE-A
12	08-05-00-2-40-SPOKE TYPE-B
4	08-05-00-2-41-SPOKE TYPE-C
2	08-05-00-2-42-SPOKE TYPE-D
2	08-05-00-2-43-FRONT WHEEL HUB
1	08-05-00-2-44-WATER PUMP ECCENTRIC
1	08-05-00-2-45-WATER PUMP ECCENTRIC STRAP
1	08-05-00-2-46-WATER PUMP PLUNGER
1	08-05-00-2-47-GOVERNOR DRIVE BELT
1	08-05-00-2-48-DRAIN COCK OPERATOR HANDLE
1	08-05-00-2-49-DRAIN COCK CONNECTOR BRACKET
1	08-05-00-2-50-DRAIN COCK CON-LEVER
1	08-05-00-2-51-SAFETY GUARD
1	08-05-00-2-52-SAFETY GUARD SHAFT END COVER
1	08-05-00-2-53-FLOOR

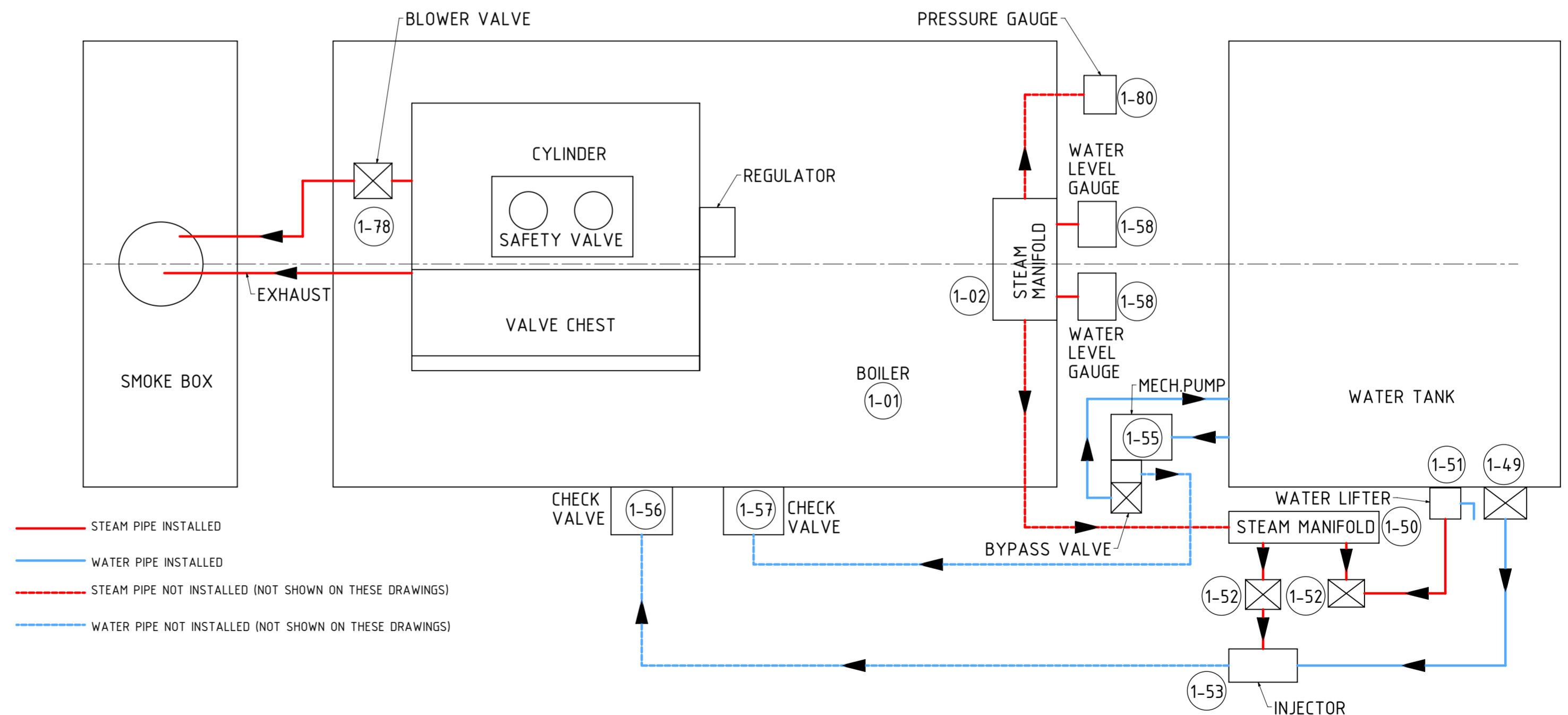
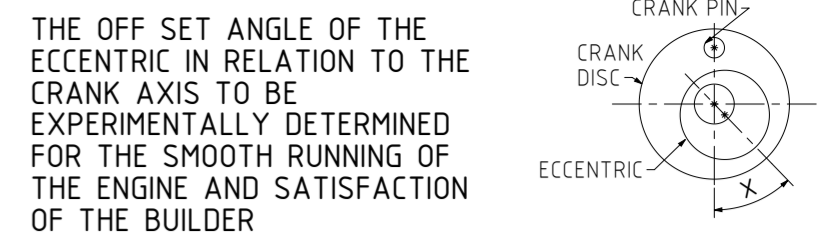
DUE TO THE LACK OF SOME INFORMATION ON THE ORIGINAL DRAWING(S), SUCH AS VIEWS, DIMENSIONS, SCALING, SECTIONS ETC AND/OR CLARITY OF COMPONENTS, OMITTED PARTS/COMPONENTS, SOME OF THE COMPONENTS MIGHT NOT BE AS CONSTRUCTED ORIGINALLY OR AS THE ORIGINAL DESIGNER INTENDED

THE FOLLOWING PARTS ARE NOT SHOWN ON THESE DRAWINGS:

- 1) SOME OF THE STEAM AND WATER PIPING
- 2) STEERING CHAIN(S)
- 3) RIVETTING HOLE PATTERN ON THE TENDER AND HORN PLATES

THE BUILDER TO INSTALL THE PIPING WHICH ARE NOT SHOWN ON THESE DRAWINGS THE BUILDER TO ROUTE THE PIPING TO THE MOST ECONOMICAL AND SHORTEST ROUTE(S) THE BUILDER TO CALCULATE THE LENGTH OF THE STEERING CHAIN AND PURCHASE THE APPROPRIATE TYPE OF CHAIN SOME OF THE PRESS FIT PINS CAN BE REPLACED WITH SPLIT PINS/COTTER PINS

FOR SOME MORE INFORMATION AND PICTURES OF THIS ENGINE LOGON THE INTERNET



NOTES: DOWNLOADED ORIGINAL DRAWINGS FROM THE INTERNET. DRAWINGS WERE DRAWN BY BERT CLEWS, DATED NOV. 1993.

TITLE
A MODEL OF A "GARRETT" TRACTION ENGINE

DRAWING CONTENTS
BILL OF MATERIALS AND NOTES

PROJECT No 08-05-00
JDW DRAUGHTING SERVICES
J.A.M. DE WAAL, 12 BRIGHTWELL STREET PAKAPURA
2110, NEW ZEALAND. PHONE: 0064 09 2988815. MOB:
0211791000 E-MAIL: dewaal@tra.co.nz.

PROJECTION
JDWDS MODEL SCALE: 1:3
DWG SCALE: 1:1 @A2 OR AS SHOWN
DATE MARCH 2024 Copyright © J.A.M. DE WAAL PAKAPURA NZ
SHEET: 05 OF 22 **A2** No:08-05-00-SHT-05

PLEASE NOTE THIS IS AN "A2" SIZE SHEET

DRAWINGS ARE FOR PERSONAL USE ONLY NOT FOR COMMERCIAL PURPOSES