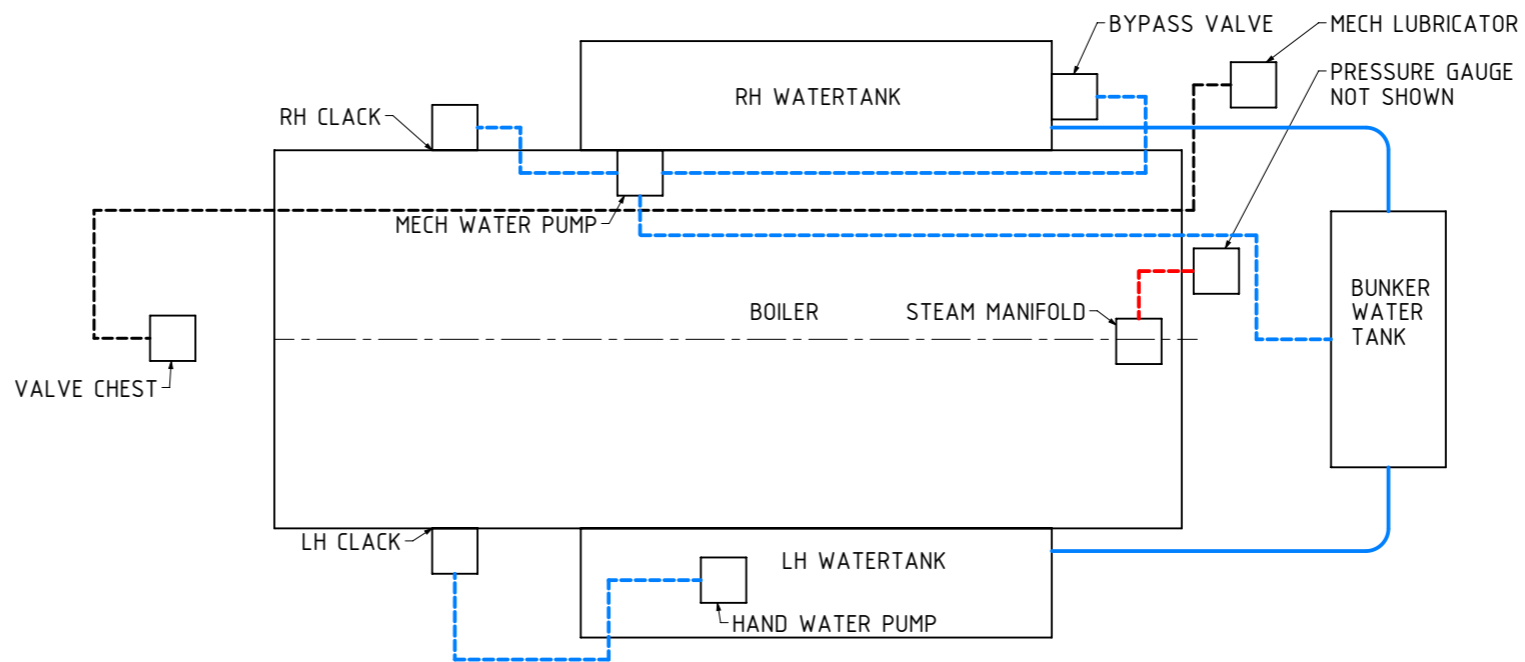


LUBRICATION ARRANGEMENT
 OF THE "MODEL ENGINEER"
 MODEL ENGINEER | February 1964

LUBRICATION PIPES AS SHOWN IN THE ORIGINAL DESIGN OF THE "MODEL ENGINEER" THESE PIPES ARE NOT SHOWN ON THIS SET OF DRAWINGS. THE BUILDER TO INSTALL PIPES AS REQUIRED

- NO WATER PIPE INSTALLED
- WATER PIPE INSTALLED
- NO STEAM PIPE INSTALLED
- NO OIL PIPE INSTALLED

THE BUILDER TO INSTALL THE MISSING PIPING AND CHOOSE THE ROUTE OF THE PIPING



NOTES: THE ORIGINAL DRAWINGS WERE DOWNLOADED FROM THE INTERNET A VERY LONG TIME AGO. THE DRAWINGS WERE PUBLISHED IN THE "MODEL ENGINEER" MAGAZINE OF 1963 AND 1964. THE TITLE OF THE ARTICLE WAS "BOXHILL STROUDLEY TERRIER IN 5in GAUGE" BY MARTIN EVANS.

TITLE
A MODEL OF A 0-6-0 TANK LOCOMOTIVE CALLED "BOXHILL"

DRAWING CONTENTS
PARTS AND ASSEMBLIES

PROJECT No 07B-23-00
 JDW DRAUGHTING SERVICES
 J.A.M. DE WAAL, 12 BRIGHTWELL STREET PAPAOKURA
 2110, NEW ZEALAND. PHONE: 0064 09 2988815. MOB:
 0211791000 E-MAIL: dewaal@xtra.co.nz.

PROJECTION
JDWDS
 DATE MAY 2024
 SHEET: 17 OF 17

MODEL SCALE: 1:11.3 (127mm/5inch)
 DWG SCALE: 1:1 @A3 OR AS SHOWN
 Copyright © J.A.M. DE WAAL PAPAOKURA NZ
A3 No: 078-23-00-SHT17

DRAWINGS ARE FOR PERSONAL USE ONLY NOT FOR COMMERCIAL PURPOSES