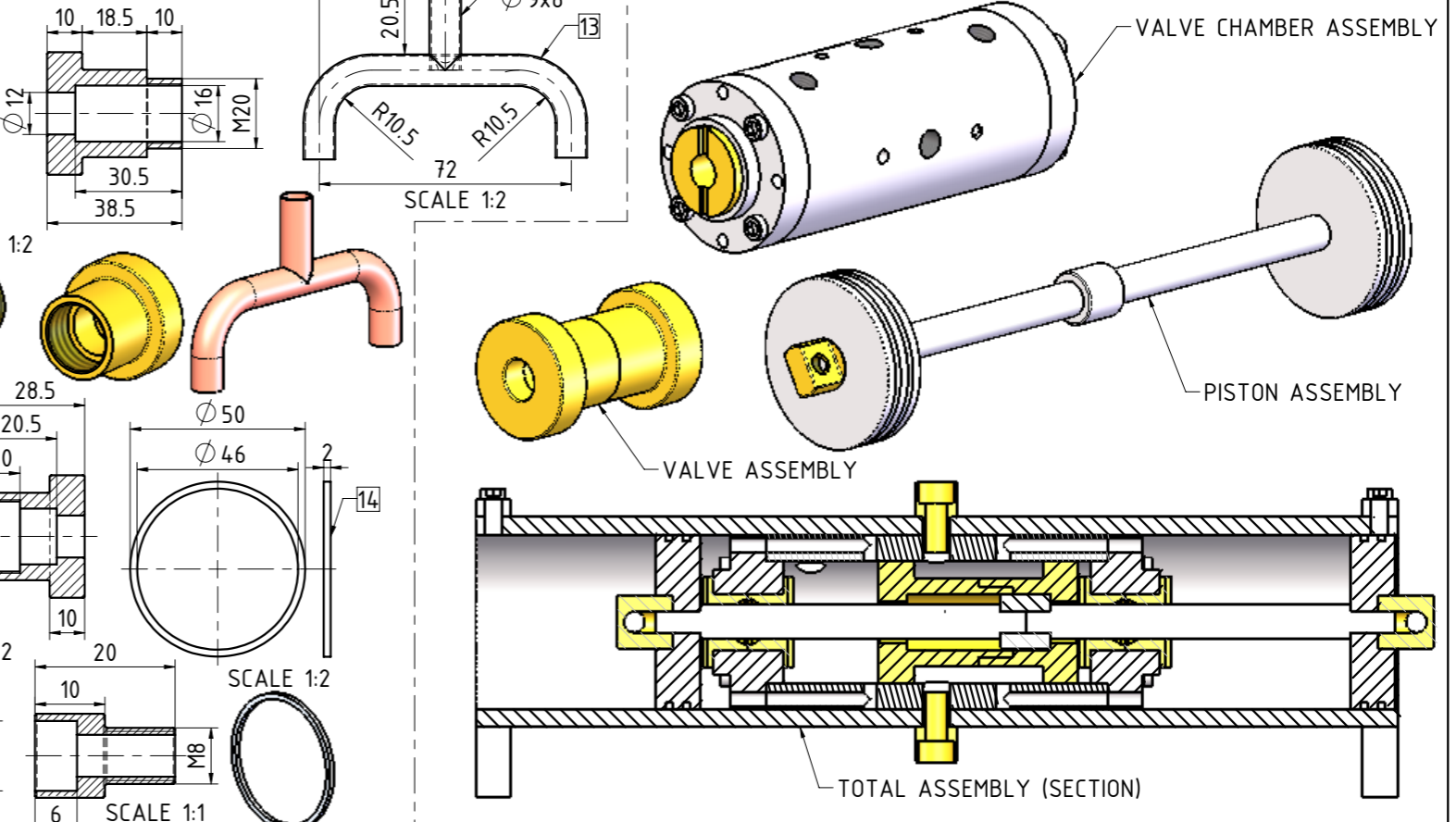
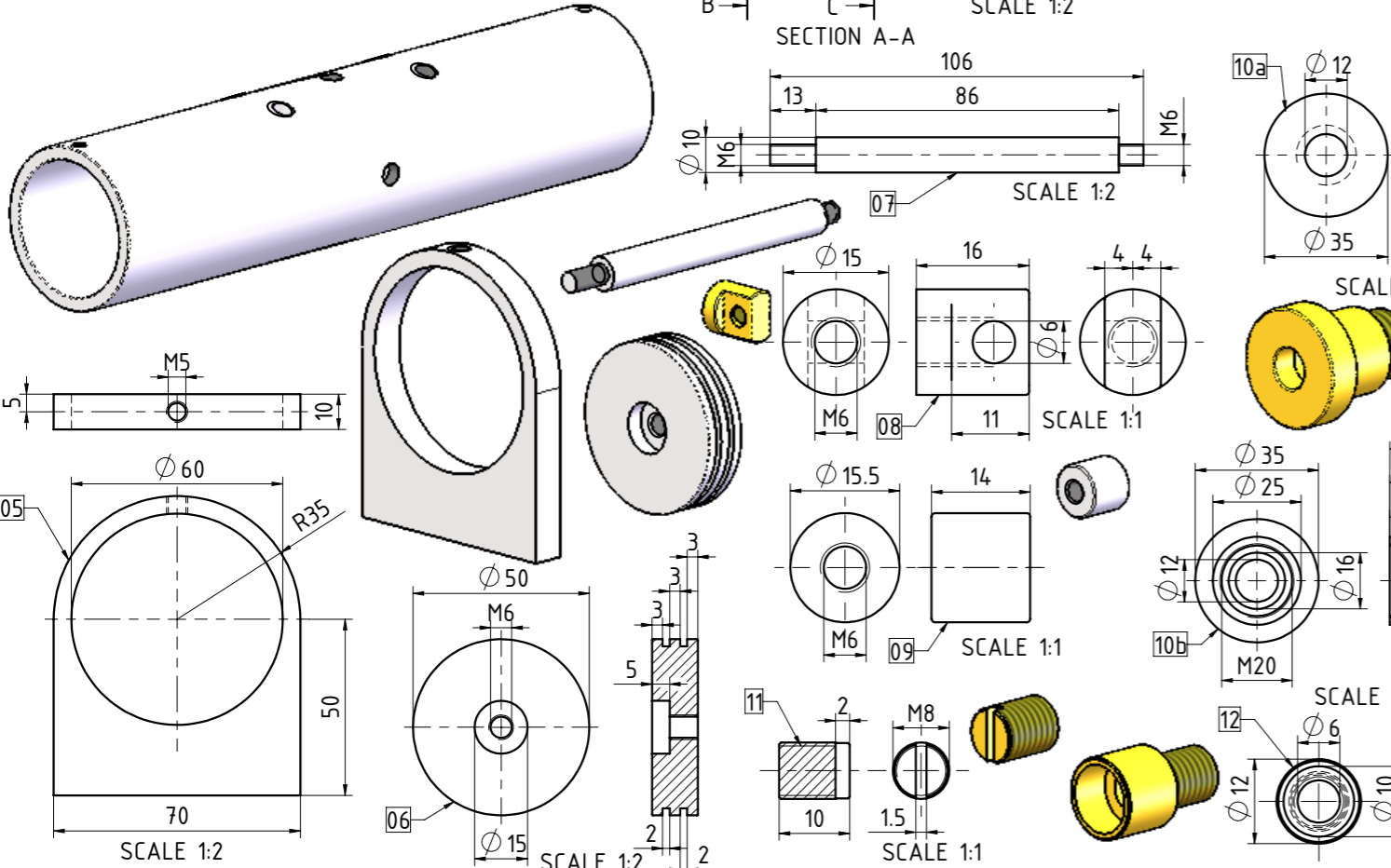
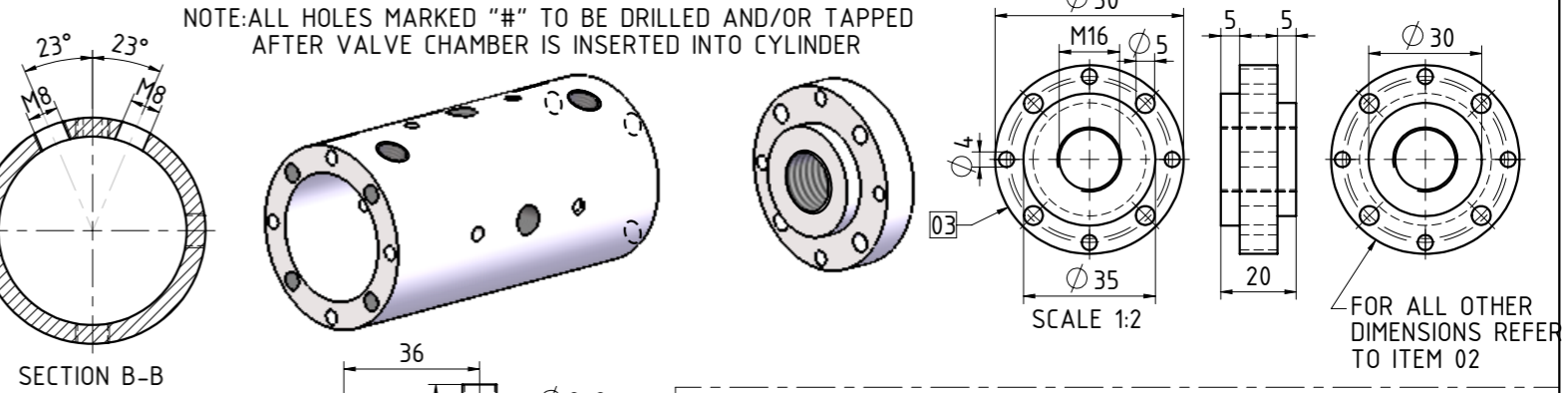
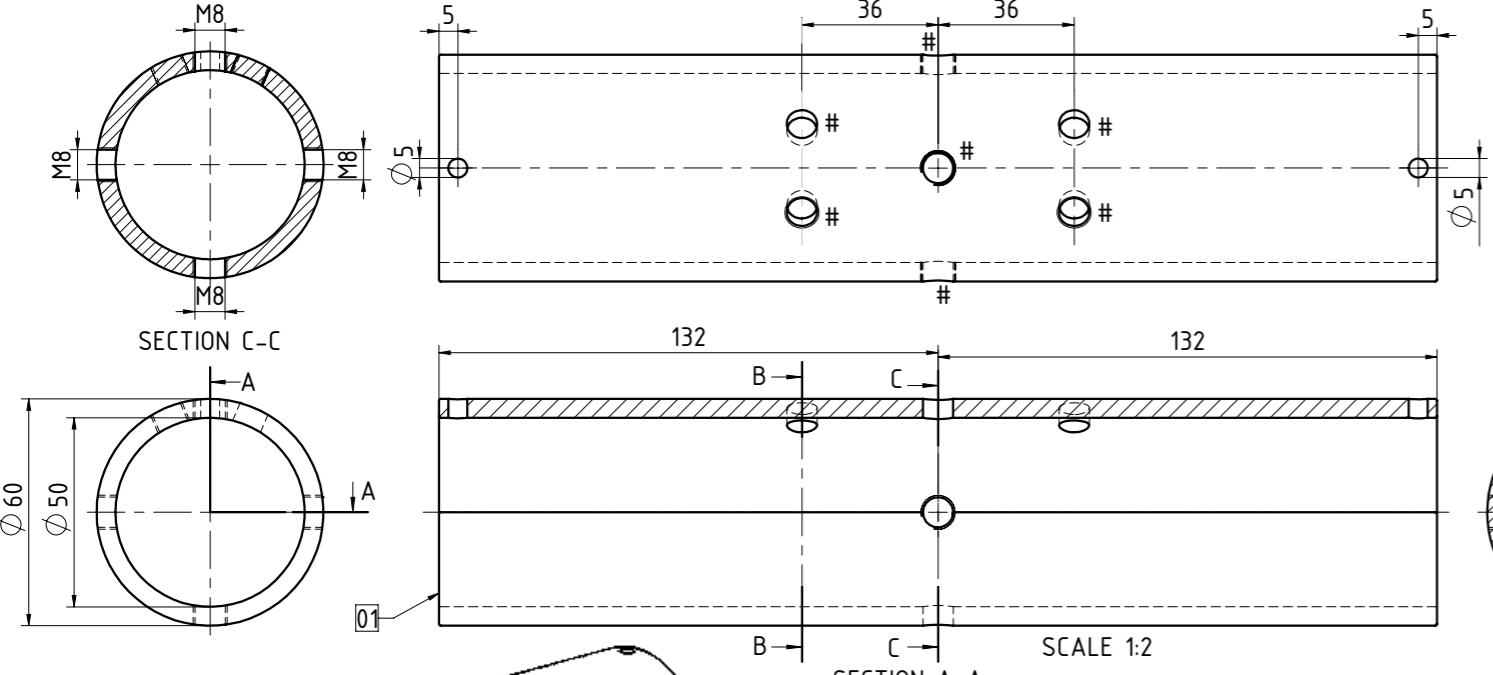
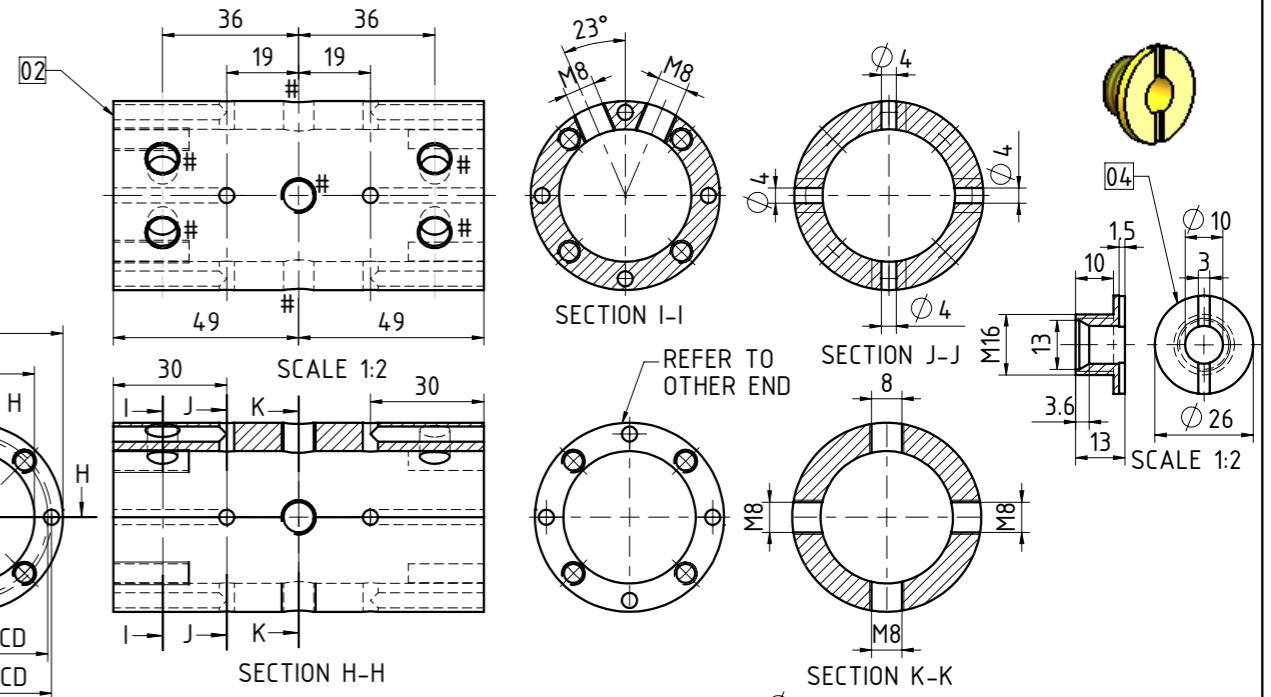
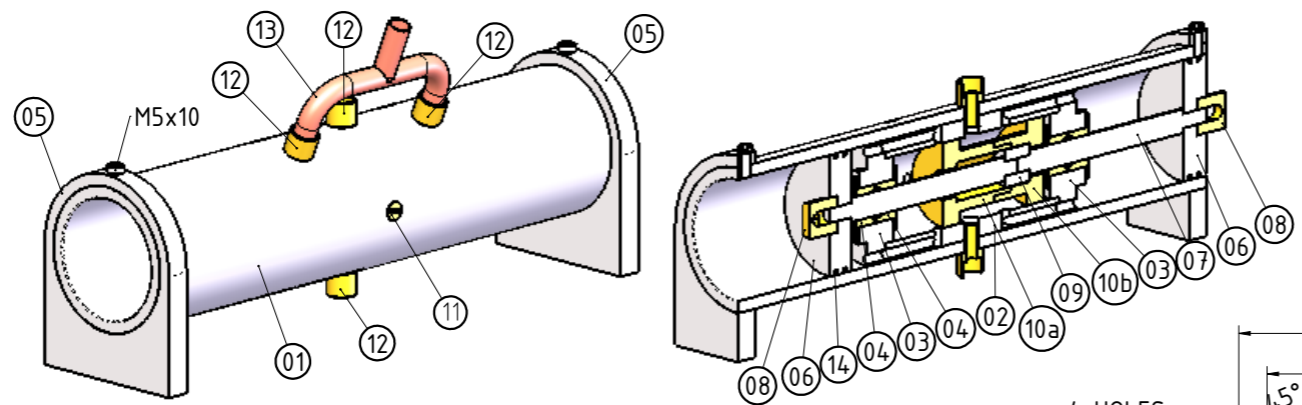


QTY.	TOTAL ASSEMBLY	DWG No
1	01-CYLINDER	
1	02-VALVE CHAMBER	
2	03-SEPARATION PLATE	
4	04-SEALING SCREW	
2	05-SUPPORT BRACKET	
2	06-PISTON	
2	07-PISTON ROD	
2	08-PISTON LOCK NUT	
1	09-VALVE NOCKER	
1	10a-VALVE-1	
1	10b-VALVE-2	
4	11-SCREW PLUG	
4	12-IN-OUT NIPPLE	
1	13-INLET PIPE	
4	14-PISTON RING	
2	M5x10 ALLEN KEY	
8	M5x20 ALLEN KEY	



TITLE EXPERIMENTAL HORIZONTAL TWIN CYLINDER LINEAR STEAM ENGINE ASSEMBLIES AND PARTS

JDW DRAUGHTING SERVICES 12 BRIGHTWELL STREET PAPAURA NEW ZEALAND TEL/FAX 0064-09-2988815 E-MAIL: dewaal@xtra.co.nz			DRAWN BY J.A.M. DE WAAL	PROJECTION 	DRAWING NUMBER LSTM-001
A ISSUED TO NVM REV DESCRIPTION DATE	01/2009	DATE APRIL 2006	SCALE AS SHOWN	CAD FILE	REV A