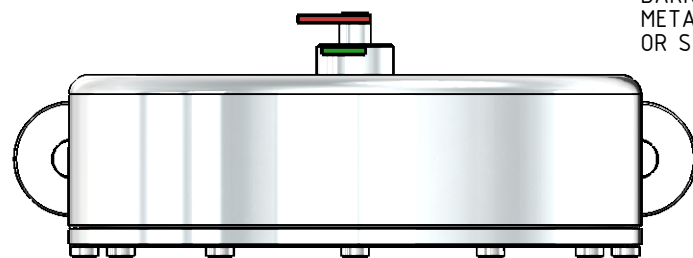
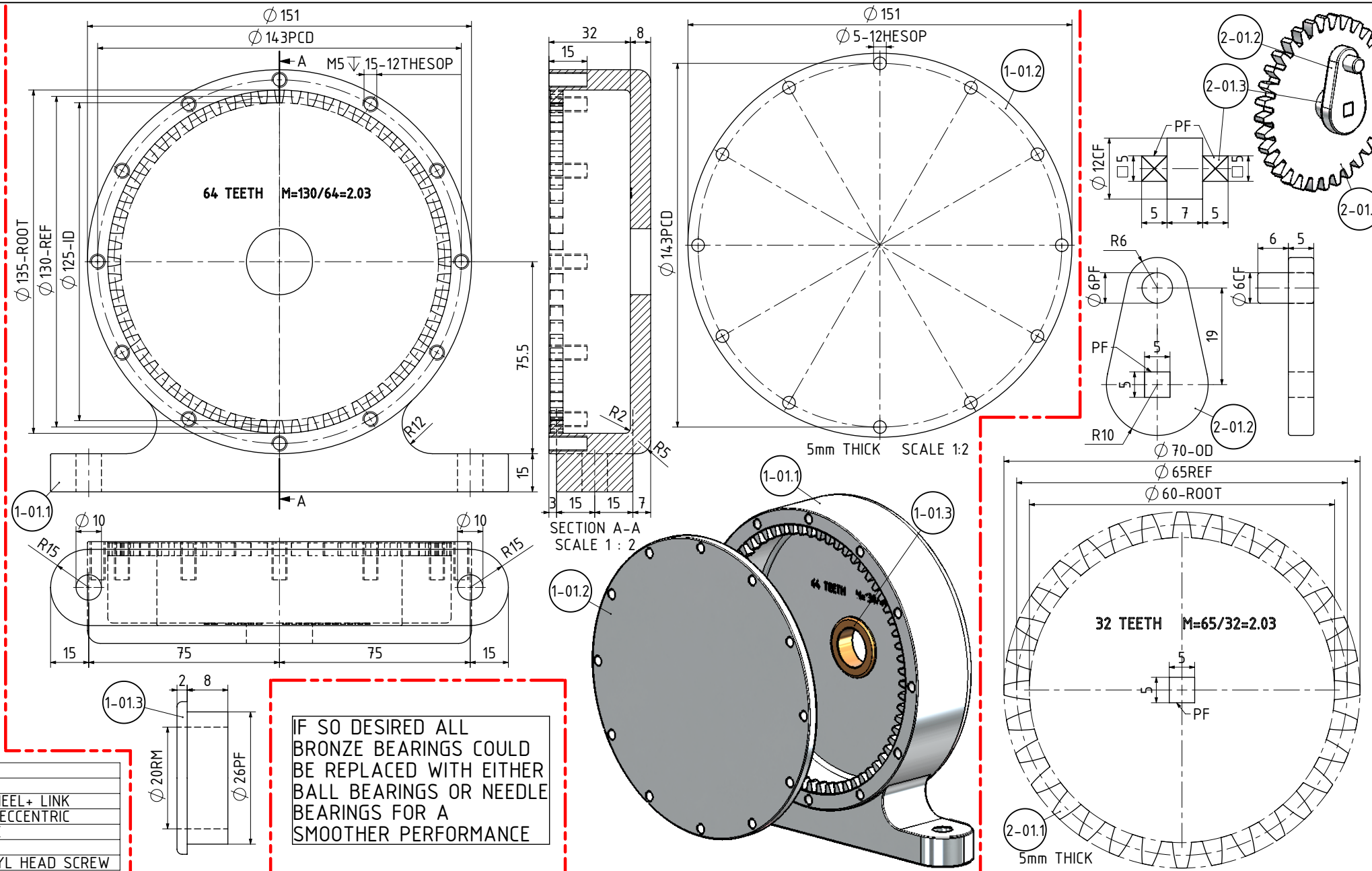


**GENERAL NOTES:**  
 0. ALL DRAWINGS ARE IN METRIC MEASUREMENTS  
 1. ALL ENGINEERING PRACTICES SHALL BE APPLIED WITH REGARDS TO HOLE AND SHAFT TOLERANCES.  
 2. WHERE SCREWS OR BOLTS ARE USED THE CLEARANCE HOLES SHALL BE APPROXIMATELY 5% TO 8% LARGER THAN THE MATCHING TAPPED HOLE.  
 3. PREFERABLY ALL TAPPED HOLES AND MATCHING SCREWS AND/OR BOLTS TO BE METRIC FINE (MF)  
 4. MATERIALS SPECIFIED ON THE DRAWINGS ARE INDICATIVE ONLY. THE BUILDER CAN MAKE HIS/HER OWN MATERIAL CHOICE.  
 5. ALL CONNECTIONS/JOINTS WHICH HAVE STEAM PRESSURE APPLIED TO IT SHALL BE SILVER/HARD SOLDERED.  
 6. COMPRESSION SPRINGS ARE DRAWN IN COMPRESSED STATE (CP), UNCOMPRESSED STATE IS APPROX 40% TO 60% LONGER THEN COMPRESSED STATE.  
 7. WHERE PREFERRED SCREW OR RIVETED CONNECTIONS CAN BE OMITTED AND PARTS CAN BE BONDED TOGETHER BY USING EITHER HIGH STRENGTH GLUE, EPOXY RESIN, OR SOLDER.  
 8. PARTS WHICH ARE DIRECTLY EXPOSED TO STEAM AND/OR WATER SHOULD BE CONSTRUCTED USING NON-FERROUS OR NON CORROSIVE MATERIAL SUCH AS BRASS, BRONZE, GUNMETAL, STAINLESS STEEL, COPPER OR MONEL.  
 9. THE ORDER IN WHICH THE PARTS/COMPONENTS ARE MANUFACTURED AND THE MODEL IS ASSEMBLED IS ENTIRELY LEFT TO THE BUILDER/MODEL MAKER.  
 10. A COLOUR SCHEME FOR THIS PROJECT IS ENTIRELY LEFT UP TO THE MODEL MAKER.  
 11. THE MANNER IN WHICH THE PARTS/COMPONENTS ARE MANUFACTURED IS ENTIRELY LEFT UP TO THE BUILDER.  
 12. USE LOCTITE, ON SCREW OR PRESS FIT CONNECTIONS OR SURFACES, WERE DEEMED NECESSARY TO PREVENT PARTS FROM LOOSENING.  
 13. WASHERS AND/OR SPRING WASHERS SHALL BE USED WHERE DEEMED NECESSARY.  
 14. REMOVE ALL SHARP EDGES  
 XX. ERRORS AND/OR OMISSIONS MAY OCCUR IN THE DRAWINGS, DO NOT HESITATE TO CONTACT ME SO THAT THE ERRORS/OMISSIONS CAN BE RECTIFIED.

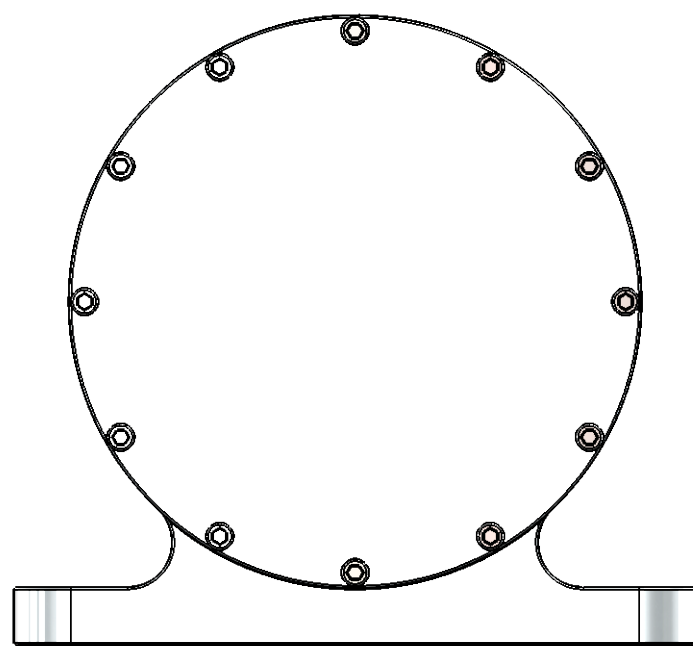
**OTHER ABBREVIATIONS**  
 AS = AS SHOWN  
 DP = DEEP  
 DAA= DRILL AFTER ASSEMBLY  
 D&TAA= DRILL AND TAP AFTER ASSEMBLY  
 CF = CLOSE FIT (SIZE FOR SIZE)  
 PF = PRESS FIT  
 PFAA= PRESS FIT AFTER ASSEMBLY  
 PCD = PITCH CIRCLE DIAMETER  
 RM = REAM  
 HEX = HEXACON, 6SIDED  
 CP = COMPRESSED  
 KNL = KNURLED  
 CSK = COUNTERSINK  
 PL = PLACES  
 DWL= DOWEL  
 SPF= SPOTFACE  
 (T)HESOP=(TAPPED)HOLES EQUALLY SPACED ON PCD  
 (T)HESOC=(TAPPED)HOLES EQUALLY SPACED ON CIRCUMFERENCE  
 OD = OUTSIDE DIAMETER  
 ID = INSIDE DIAMETER  
 MAX/MIN = CRITICAL DIMENSION  
 [SA-xxx]= SUB ASSEMBLY-xxx

**ADDITIONAL NOTES ABOUT THESE DRAWINGS:**  
 1) NO MATERIALS HAVE BEEN SPECIFIED ON THESE DRAWINGS. THE BUILDER TO CHOOSE ITS OWN PREFERRED MATERIAL FOR THE PARTS/COMPONENTS. THE FOLLOWING COLOURS ON THE DRAWINGS INDICATES POSSIBLE MATERIALS WHICH CAN BE USED FOR PARTS: YELLOW=BRASS, LIGHT GREY=ALUMINIUM OR MILD STEEL, REDDISH BROWN=COPPER, DARK BROWN=BRONZE OR GUN METAL, WHITISH=SILVER STEEL OR STAINLESS STEEL

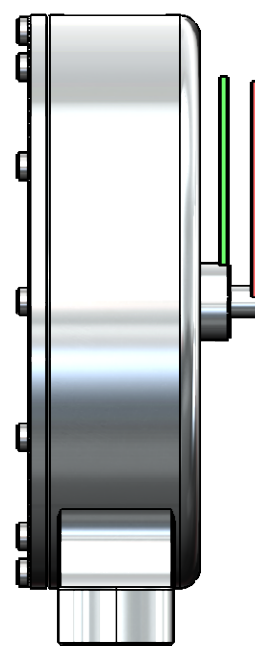
QTY	PART NUMBER
1	01-60-00-1-01-HOUSING
1	01-60-00-2-01-GEARWHEEL+ LINK
1	01-60-00-2-02-SHAFT+ECCENTRIC
1	01-60-00-2-03-SPINDLE
1	01-60-00-2-04-LINK
12	01-60-00-M5x15 A-K CYL HEAD SCREW



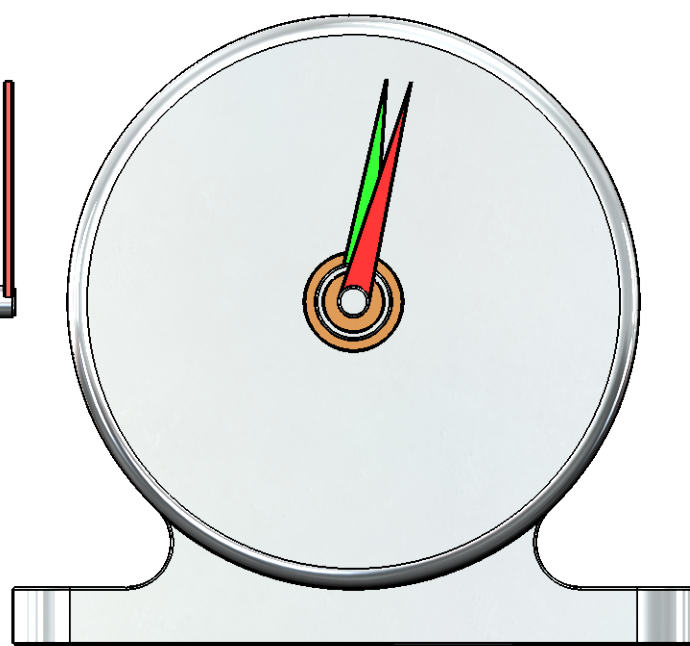
TOP VIEW



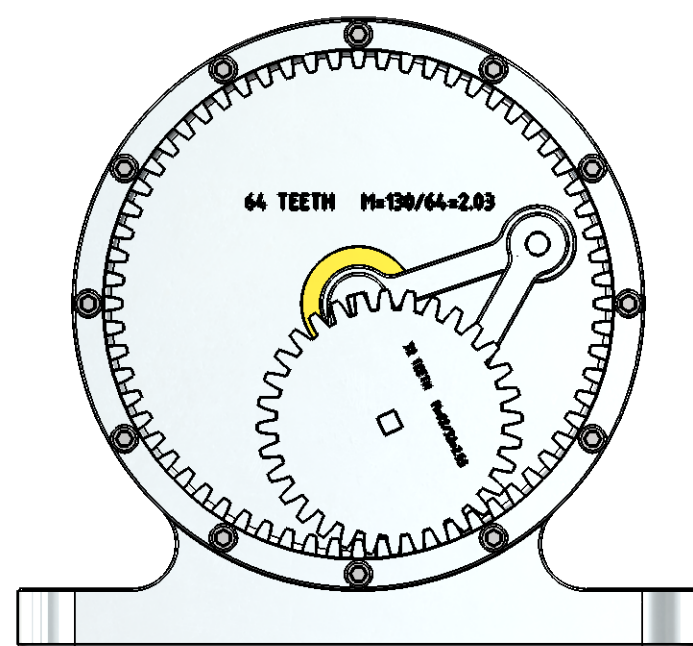
FRONT VIEW



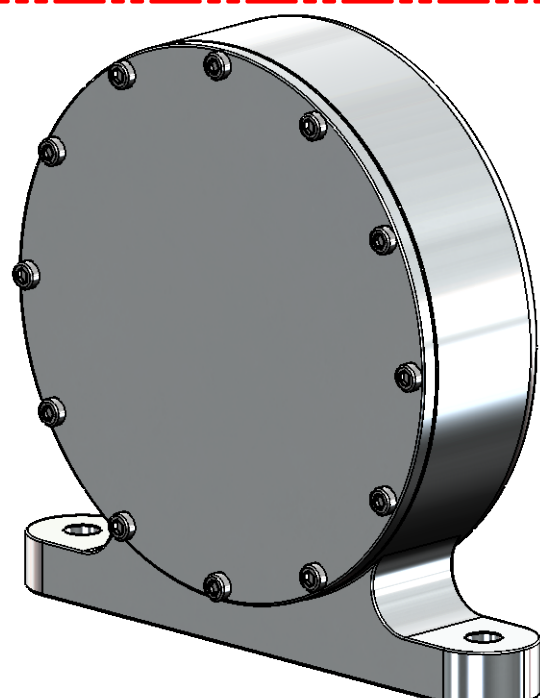
SIDE VIEW



REAR VIEW



COVER REMOVED



NOTES: THE DESIGN OF THIS TYPE OF CAT&MOUSE GEAR BOX IS BY JDW. THIS TYPE OF GEARING SYSTEM IS ALSO REFERED TO AS SCISSORS OR PURSUING

TITLE  
**EXPERIMENTAL CAT & MOUSE GEAR BOX  
 TYPE-1 (INTERNAL PLANET GEAR)**

DRAWING CONTENTS  
**GENERAL ARRANGEMENT, NOTES,  
 B.O.M. PARTS AND ASSEMBLIES**

PROJECT No 01-60-00  
 JDW DRAUGHTING SERVICES  
 J.A.M. DE WAAL, 12 BRIGHTWELL STREET PAPAOKURA  
 2110, NEW ZEALAND. PHONE: 0064 09 2988815. MOB:  
 0211791000 E-MAIL: dewaal@xtra.co.nz.

PROJECTION  
  
 DATE APRIL 2024  
 SHEET: 01 OF 04

MODEL SCALE: 1:1  
 DWG SCALE: 1:1 @A3 OR AS SHOWN  
 Copyright © J.A.M. DE WAAL PAPAOKURA NZ  
 A3 No: 01-60-00-SHT01

DRAWINGS ARE FOR PERSONAL USE ONLY NOT FOR COMMERCIAL PURPOSES